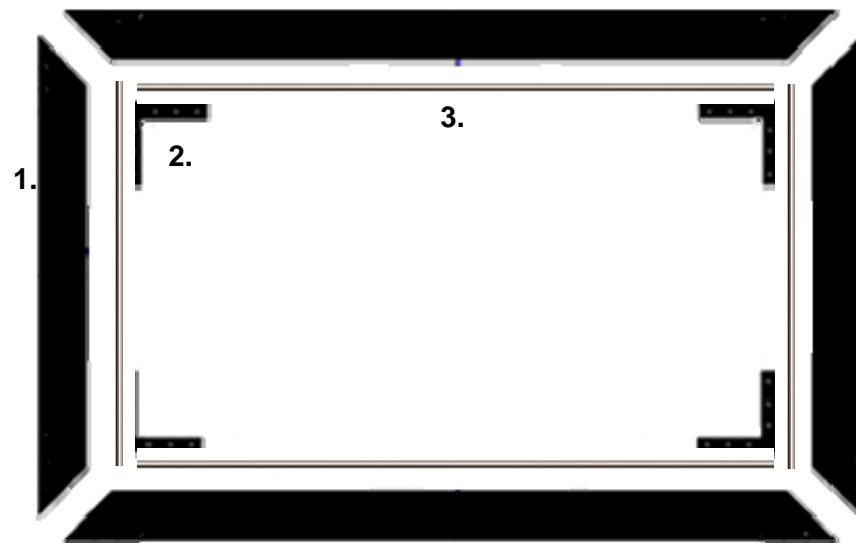


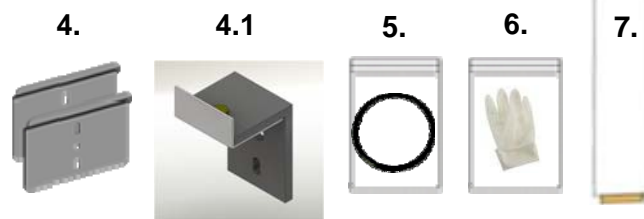


## Maestro Fixed Mount Projection Screen



Your product contains these items:

1. 4 Frame Components
2. 4 Corner Brackets
3. 4 Tension Rods
4. 2 Wall Brackets (Fig. 4.1 If Curved)
5. Black Rubber Bungees
6. Latex Gloves
7. Screen Material



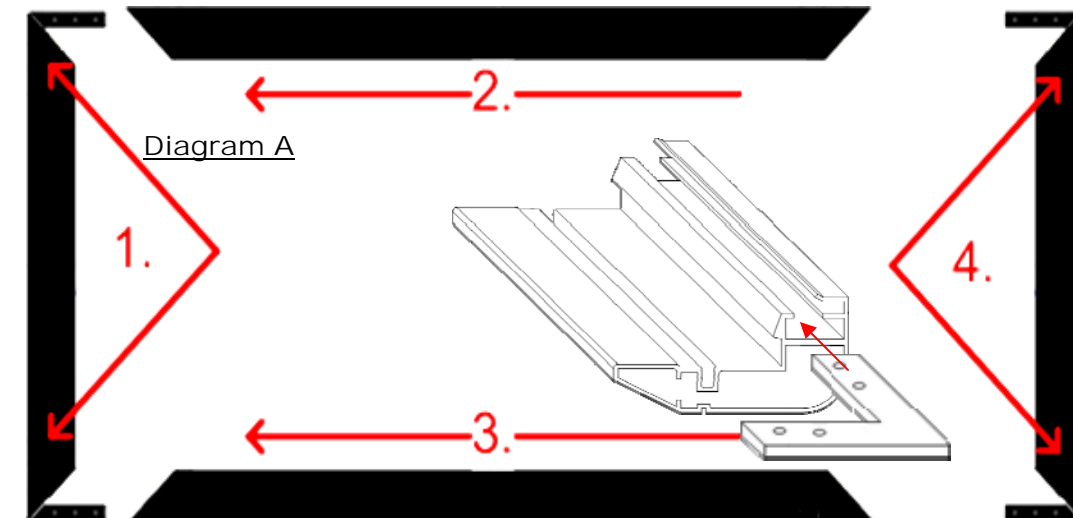
## Getting Started

1. For the best image quality, mount your projector lens level with the top or bottom of the screen. We do not recommend angling the projector or using any type of keystone correction.
2. Place the frame face down on a **clean** floor.
3. Place the remaining parts near the frame components.

## Maestro - Installation Instructions

### Frame Assembly

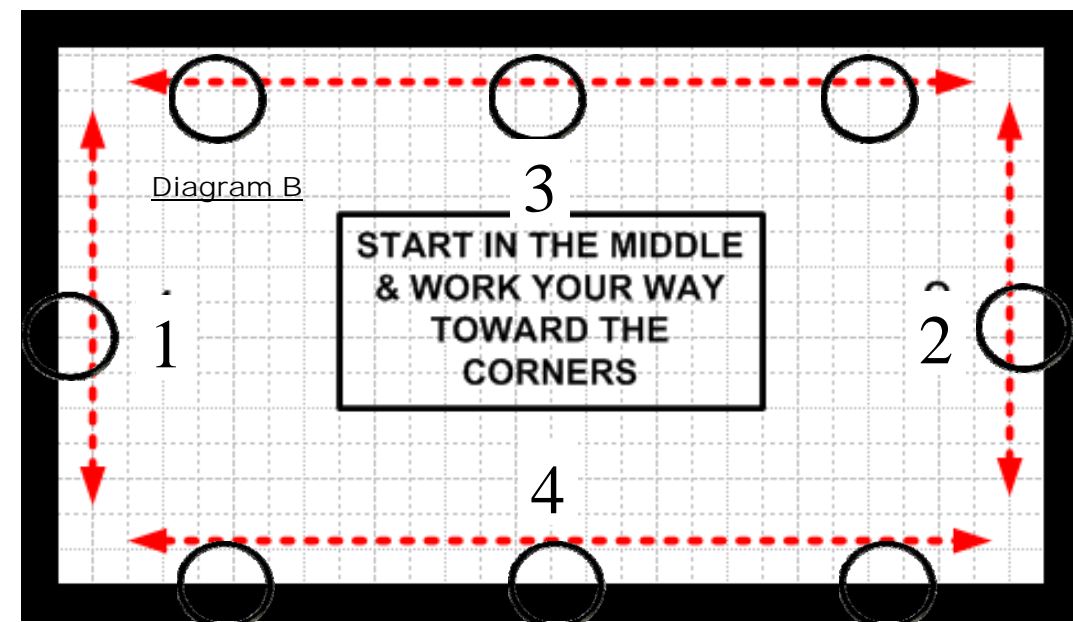
1. Insert corner brackets into the ends of the (short) vertical frame pieces — Diagram A, #1 & #4.
2. Slide each of the (long) horizontal frames, #2 & #3 onto the left vertical frame.
3. Next, slide the remaining vertical piece in place to complete the rectangle.
4. Square up each of the corners so that the extrusions are evenly aligned and lightly secure the set screws.
5. Measure each diagonal from corner to corner, and compare the two measurements—they must be within 1/8" of each other. If not, loosen all corner screws and square-up the corners to get the diagonals within tolerance. Finally, retighten all corner screws. **This process insures that all corners are at 90 degrees, and is required for the material to fit properly.**
6. Remove the rubber stick-on bumpers that hold the black posts in place while in transit. Spread the posts out evenly across the width of the frame.



### Screen Material Attachment

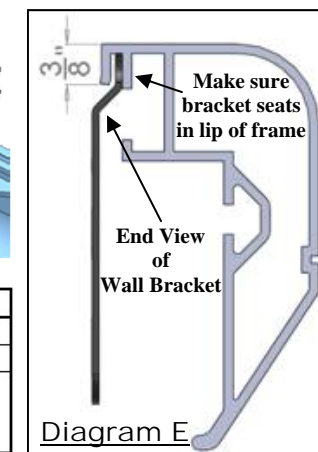
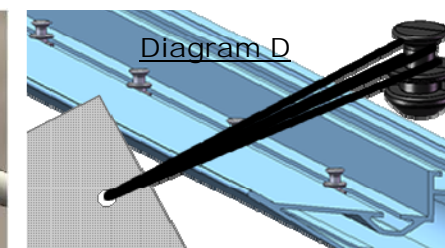
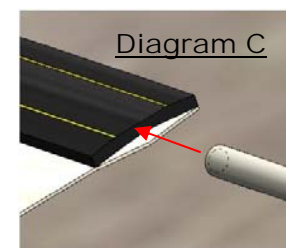
**Warning: Screen material damaged during installation or use is not covered under warranty.**

7. The Maestro screen material is rolled with the optical side out. Unpack and carefully unroll the screen material, with the Front Projection Side sticker face down on the frame, using caution to not crease the material.
8. Insert 2 tension rods in both Horizontal edges of the screen as shown in Diagram C — **Be Careful not to snag at bungee hole locations.**
9. Place the screen in center of the frame.
10. Using the supplied Black Rubber Bungees, loop each bungee around the posts starting in the centers and proceeding in order at locations 1, 2, 3, and 4 (Diagram B). This will center the material. Then loop all remaining bands. **NOTE: The bands loop through the screen and both ends attach to the same post as seen in diagram D.**
11. Once all bungees are attached make sure the attachment is straight from the hole to post, not pulling at an angle.



### Mounting Screen on the Wall

12. Using supplied drywall screws, attach the horizontal wall mounting brackets to structural wall studs according to chart on the right.
13. Place the screen on top of the horizontal wall mounting bracket so the lip on the frame slips securely into the mounting track as shown in Diagram E.
14. You may now slide the screen left or right to center your projector's image on the screen.



| Recommended Wall Bracket Spacing Chart          |                  |
|-------------------------------------------------|------------------|
| NOTE: Bracket location is from center of screen |                  |
| Screen Width                                    | Bracket Location |
| 70 - 92"                                        | 32 - 36"         |
| 92 - 120"                                       | 36 - 42"         |
| 120" and up                                     | 42 - 48"         |

Installation Help Line (512) 832-6939

[www.siscreens.com](http://www.siscreens.com)